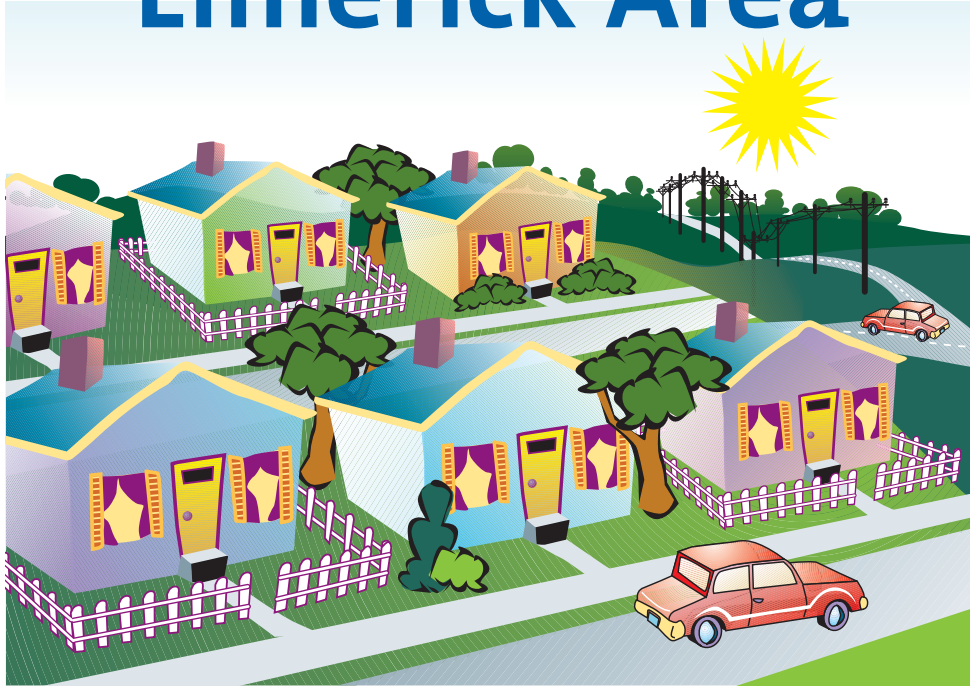


Emergency Planning for the Limerick Area



Important Safety Information For Your Community and Annual Special Needs Survey 2016/2017

Please read the entire brochure or have someone translate it for you. Discuss this information with members of your family, and then keep the brochure in a convenient place for future use.

ESTA INFORMACIÓN ES IMPORTANTE

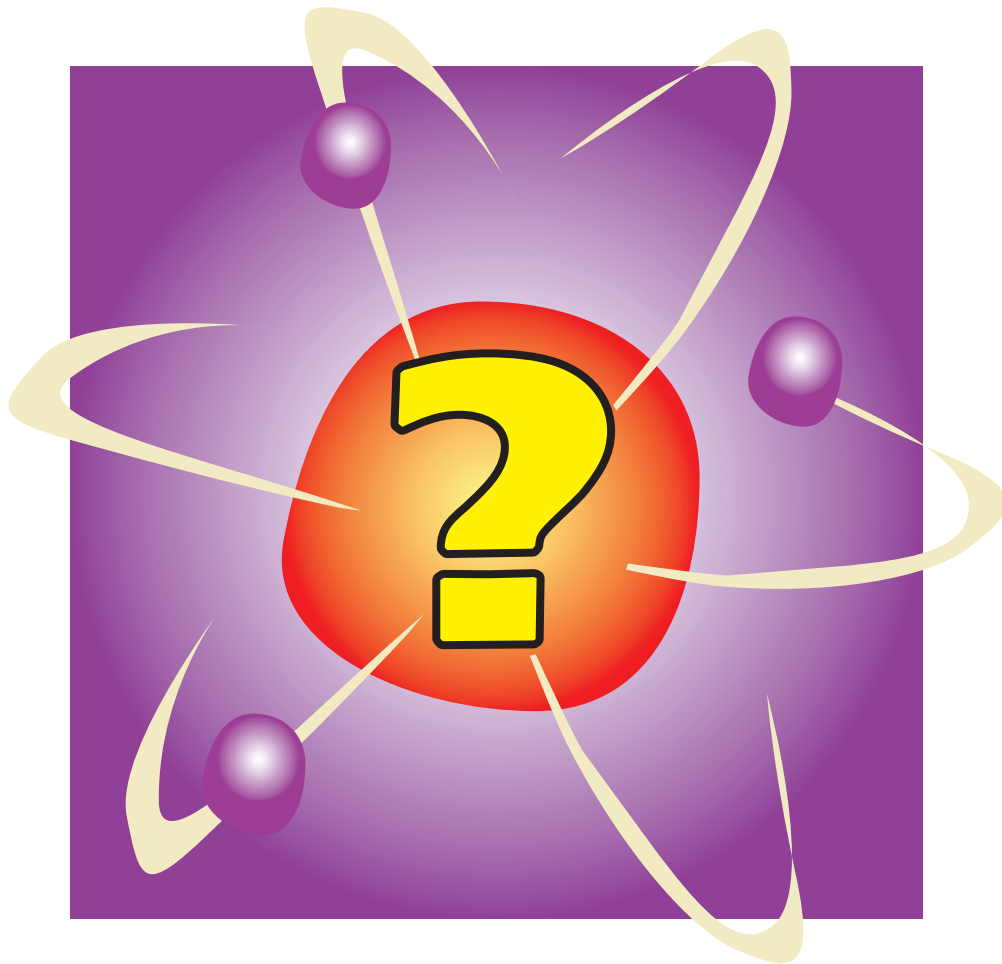
Por favor lea este panfleto o encuentre alguien que se lo lea. Discuta esta información con su familia y mantenga este panfleto en un lugar conveniente para un uso futuro. Si necesita obtener copia de este panfleto en español, por favor llame al Centro Hispano Daniel Torres, al 610-685-1264.

Nuclear Power and Public Safety

Benefits and Potential Risks of Nuclear Power

Used properly, nuclear fission (the “splitting” of uranium atoms) is a safe, dependable source of electricity. It is reasonable, though, to be concerned about what might happen in the event of a serious incident at a power plant.

A power plant reactor cannot produce a nuclear explosion. The uranium fuel contains very little fissionable material. As for radiation, the complex structure of a nuclear power plant is designed to prevent the release of radiation. A serious incident, however, could allow some radiation to escape, most likely as a cloud, or “plume,” of radioactive steam that would be carried away from the plant by the wind. The degree of risk to the public would depend on the size of the plume, the direction and speed of the wind, and other factors.



Emergency Planning for the Limerick Area

Special plans have already been developed to protect the public in the event of a nuclear incident in your area. These plans give specific attention to people who – like you – live, work or visit within 10 miles of a nuclear power plant. Procedures are in place to help protect you and other members of the public in the unlikely event of a nuclear emergency. If necessary, area officials would declare an emergency and take measures to ensure public safety.

This pamphlet addresses procedures for the Limerick area. Please read and keep this material for future reference. Although it specifically addresses a potential nuclear accident, much of the information is useful in any major emergency.

Warning Sirens

Communities across the United States may use outdoor warning sirens for many purposes. Sirens are not exclusive to nuclear power facilities. Sirens are designed to warn the public of many hazards, including fires, flooding, and other events that warrant public notifications. If you hear a siren, you should tune to one of the Emergency Alert System (EAS) stations listed in this brochure for official information. Sirens surrounding the Limerick Generating Station are routinely tested at 2 pm on the first Monday of each month.

Rumor Control Telephone Numbers

Berks County (610) 320-6150
Montgomery County (610) 631-9700
Chester County (610) 344-6480
TTY/TTD (610) 344-4785

Siren Malfunction

A siren may malfunction and inadvertently sound. Some indications of a siren malfunction are a siren sounding for more than five minutes, or a siren sounding with no accompanying message on the Emergency Alert System.

Siren Malfunction Contact Numbers

Report siren malfunctions to the following county emergency management officials at the numbers below:

Berks County (610) 655-4921
Montgomery County (610) 631-6530
Chester County (610) 344-5000 or (800) 732-1580

Shelter-in-Place or Evacuation

Officials might recommend that people either take shelter indoors or evacuate an area. It is critically important that you follow the recommended course of action. Staying home when instructed to evacuate or driving around when urged to stay indoors could expose you to danger unnecessarily.

NOTE: If you or someone you know might not respond to warning sirens or radio broadcasts due to impaired hearing or other factors, please use the attached reply card to notify local authorities now.

Potassium Iodide (KI)

The use of potassium iodide (KI) is an additional protective action to a shelter/evacuation action. You should still be safe, if KI has been recommended but is inaccessible. State and local officials will announce when the public should take KI in repeated Emergency Alert System messages. KI is a nonprescription medication that blocks the uptake of radioactive iodine by the thyroid gland. KI does not protect a person or the thyroid from direct exposure to radiation. Taking KI only saturates the thyroid with nonradioactive iodide. For most individuals, taking KI is safe; however, adverse reactions are possible in persons having existing thyroid conditions and those with an allergy to iodine. Consult your physician if you have concerns about the safety of KI for your child or yourself. Follow the directions for storage and use that were included with the product. Residents living within the 10-mile radius, who have not already done so, may obtain more information about KI or obtain KI by contacting:

**Pennsylvania Department of Health at 1-877-PA-HEALTH or
www.health.state.pa.us**

Classification of Accidents

Should an accident occur at the Limerick Generating Station, there are four accident classifications you might hear reported on the radio or TV, or read about in the newspapers.

UNUSUAL EVENTS — Events are in process or have occurred which indicate a potential degradation of the level of safety of the plant or indicate a security threat to facility protection. No releases of radioactive material requiring off-site response or monitoring are expected unless further degradation of safety system occurs.

ALERT — Events are in process or have occurred which involve an actual or potential substantial degradation of the level of safety of the plant or a security event that involves probable life threatening risk to site personnel or damage to site equipment because of intentional malicious dedicated efforts of a hostile act. Any releases are expected to be limited to small fractions of the Environmental Protection Agency (EPA) Protective Action Guideline exposure levels.

SITE AREA EMERGENCY — Events are in process or have occurred which involve actual or likely major failures of plant functions needed for protection of the public or security events that result in intentional damage or malicious acts: (1) toward site personnel or equipment that could lead to the likely failure of or; (2) prevents effective access to equipment needed for the protection of the public. Any releases are not expected to result in exposure levels which exceed EPA Protective Action Guide exposure levels beyond the site boundary.

GENERAL EMERGENCY — Events are in process or have occurred which involve actual or imminent substantial core degradation or melting with potential for loss of containment integrity or security events that result in an actual loss of physical control of the facility. Releases can be reasonably expected to exceed EPA Protective Action Guide exposure levels offsite for more than the immediate site area.

Emergency Alert System

The **Emergency Alert System** will provide you with official information in cases of tornadoes, floods, nuclear plant accidents or other emergencies. Turn on your radio or TV for official information and instructions.

Emergency Alert Stations

Berks County AM

WEEU 830
WRAW 1340

FM

WRFY 102.5
WBYN 107.5
WXAC 91.3

Chester County FM

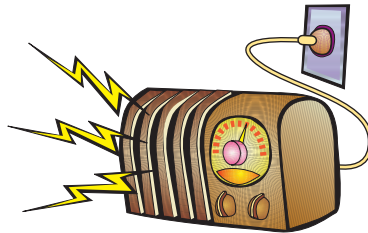
WHYY 90.9*
WMGK 102.9*

Montgomery County AM

KYW 1060
WNPV 1440
WNTP 990

TV

Pottstown Community
Television



Packing Checklist

Medical Supplies

Prescribed medications, first aid kit, eyeglasses, hearing aids

Money

Cash, credit and ATM cards

Important Documents

Personal address book or papers you may need in an emergency

Clothing

Including coats, shoes, outerwear

Personal Hygiene Items

Soap, shampoo, shaving kit, dental, eye care and sanitary products

Baby Needs

Bottles, formula, diapers, favorite toy, clothes, blanket, car seat

Foods for Special Diets

Bedding





Know your location on the map and mark it. Some primary evacuation routes and all pick-up points are listed below. In an emergency, follow the directions given on the radio, even if different from those shown below. Broadcasted directions will be based on actual road and weather conditions and wind direction – helping to ensure your safety as you leave the evacuation area. Report to the identified reception center if you need a temporary place to stay. At the center, you will be given directions to a mass care center nearby. For those who require transportation assistance, call the transportation assistance numbers listed below for your area.

Evacuation Routes/Reception Centers/ Transportation Assistance Numbers

Berks County

Amity Township (Amity Gardens)

Evacuation Route: Take Route 422 West to the reception center.

Reception Center: Exeter Township Building, East of Reading.

Transportation Assistance Number: (610) 689-6000

Amity Township (East)

Evacuation Route: Take Route 662 North to Route 73 East to reception center.

Reception Center: Oley Valley High School, Oley.

Transportation Assistance Number: (610) 689-6000

Boyertown Borough

Evacuation Route: Take Route 73 West to reception center.

Reception Center: Oley Valley High School, Oley.

Transportation Assistance Number: (610) 369-1362

Colebrookdale Township (West of Route 100)

Evacuation Route: Take Route 73 West to the reception center.

Reception Center: Oley Valley High School, Oley.

Transportation Assistance Number: (610) 369-1362

Colebrookdale Township (East of Route 100)

Evacuation Route: Take Route 100 North to Route 29 North to the reception center.

Reception Center: Emmaus High School, Emmaus.

Transportation Assistance Number: (610) 369-1362

Douglass Township (South)

Evacuation Route: Take Route 662 North to Route 73 East to the reception center.

Reception Center: Oley Valley High School, Oley.

Transportation Assistance Number: (610) 367-8500

Douglass Township (North)

Evacuation Route: Take Route 562 West to Route 662, North to Route 73 East to the reception center.

Reception Center: Oley Valley High School, Oley.

Transportation Assistance Number: (610) 367-8500

Earl Township

Evacuation Route: Take Route 562 West to 662 North to Route 73 East to the reception center.

Reception Center: Oley Valley High School, Oley.

Transportation Assistance Number: (610) 367-8920

Union Township

Evacuation Route: Take Route 724 West to the reception center.

Reception Center: Robeson Township Building.

Transportation Assistance Numbers: (610) 385-3769 or (610) 582-3769

Washington Township

Evacuation Route: Take Route 100 North to Route 29 North to the reception center.

Reception Center: Emmaus High School, Emmaus.

Transportation Assistance Number: (610) 845-7760

Pick-up Points

Boyertown Bus Routes (Municipal Pick-up Points)

Schedule 1

- S. Reading Ave. & Walker Dr.
- S. Reading Ave. & College, Walnut, & W. Second Street “Hub”
- E. Philadelphia Ave. at Chestnut St. – Inner Core Lot

Schedule 2

- Second & Madison Sts.
- Third & Madison Sts.
- Fourth & Madison Sts.
- Fifth & Franklin Sts. – Tot Lot

Schedule 3

- N. Reading Ave. & Spring St.
- Multi Service – YMCA Building

Schedule 4

- W. Philadelphia Ave. & Walnut St.
- W. Philadelphia Avenue & Orchard Hills

Schedule 5

- Borough Hall Lot
- E. Philadelphia Ave. & Franklin St.
- E. Philadelphia Ave. at Chestnut St. – Inner Core Lot

Berks County-Specific School Information

School District: Daniel Boone

Risk Schools: Amity Elementary Center
Monacacy Elementary Center
Daniel Boone Middle School
Host School: Daniel Boone High School

School District: Boyertown Area

Risk Schools: Boyertown Senior High
Boyertown Junior High East
Boyertown Junior High West
Host School: Keystone Hall, Kutztown University
Risk Schools: Boyertown Elementary
Host School: Kutztown Area Middle School
Risk Schools: Colebrookdale Elementary
New Hanover Elementary
Host School: Kutztown Area High School
Risk Schools: Gilbertsville Elementary
Pine Forge Elementary
Host School: Kutztown Elementary School

Evacuation Routes/Reception Centers/ Transportation Assistance Numbers

Chester County

Charlestown Township

Evacuation Route: Take Route 29 South to Route 202 South to the reception center.

Reception Center: Stetson Middle School (Route 202 South of West Chester).

Transportation Assistance Number:
(610) 495-5433

East Coventry Township

Evacuation Route: Take Route 23 West to the reception center.

Reception Center: Morgantown Crossings.

Transportation Assistance Number:
(610) 240-0326

East Nantmeal Township – West

Evacuation Route: Take Route 401 West to Route 23 West to the reception center.

Reception Center: Morgantown Crossings.

Transportation Assistance Number:
(610) 458-5780

East Nantmeal Township – East

Evacuation Route: Take Route 100 South to Route 113 South to Route 30 Bypass West to 322 East to the reception center.

Reception Center: Downingtown West HS, Downingtown.

Transportation Assistance Number:
(610) 458-5780

East Pikeland Township

Evacuation Route: Take Route 113 South to Gordon Drive to Route 100 South to the reception center.

Reception Center: W. Whiteland Township Building (Route 100 South of Business Route 30 at Commerce Drive).

Transportation Assistance Number:
(610) 933-1770

East Vincent Township

Evacuation Route: Take Route 23 East to Route 113 South to Gordon Drive to Route 100 South to the reception center.

Reception Center: W. Whiteland Township Building (Route 100 South of Business Route 30 at Commerce Drive).

Transportation Assistance Number:
(610) 933-4424

North Coventry Township – South

Evacuation Route: Take Route 100 South to Route 23 West to the reception center.

Reception Center: Morgantown Crossings.

Transportation Assistance Number:
(610) 323-1694

North Coventry Township – North

Evacuation Route: Take Route 724 West to the reception center.

Reception Center: Robeson Township Building.

Transportation Assistance Number:
(610) 323-1694

Phoenixville Borough – North

Evacuation Route: Take Route 23 East to Route 252 South to Route 202 South to the reception center.

Reception Center: Stetson Middle School (Route 202 South of West Chester).

Transportation Assistance Number:
(610) 933-3500

Phoenixville Borough – South

Evacuation Route: Take Route 29 South to Route 202 South to the reception center.

Reception Center: Stetson Middle School (Route 202, South of West Chester).

Transportation Assistance Number:
(610) 933-3500

Schuylkill Township (East)

Evacuation Route: Take Route 23 East to Route 252 South to Route 202 South to the reception center.

Reception Center: Stetson Middle School (Route 202 South of West Chester).

Transportation Assistance Number:
(610) 933-5843

Schuylkill Township (West)

Evacuation Route: Take Route 29 South to Route 202 South to the reception center.

Reception Center: Stetson Middle School (Route 202 South of West Chester).

Transportation Assistance Number:
(610) 933-5843

South Coventry Township

Evacuation Route: Take Route 23 West to the reception center.

Reception Center: Morgantown Crossings.

Transportation Assistance Number:
(610) 469-0444

Spring City Borough

Evacuation Route: Take Route 724 East to Route 23 E. to Route 113 South to Gordon Drive to Route 100 South to the reception center.

Reception Center: W. Whiteland Township Building (Route 100 South of Business Route 30 at Commerce Drive).

Transportation Assistance Number:
(610) 948-3660

Upper Uwchlan Township

Evacuation Route: Take Route 100 South to Route 113 South to Route 30 Bypass West to Route 322 East to the reception center.

Reception Center: Downingtown West HS, Downingtown.

Transportation Assistance Number:
(610) 458-9400

Uwchlan Township

Evacuation Route: Take Route 113 South to Gordon Drive to Route 100 South to the reception center.

Reception Center: W. Whiteland Township Building (Route 100 South of Business Route 30 at Commerce Drive).

Transportation Assistance Number:
(610) 363-9450

Warwick Township

Evacuation Route: Take Route 23 West to the reception center.

Reception Center: Morgantown Crossings.

Transportation Assistance Number:
(610) 286-5557

West Pikeland Township

Evacuation Route: Take Route 113 South to Gordon Drive to Route 100 South to the reception center.

Reception Center: W. Whiteland Township Building (Route 100 South of Business Route 30 at Commerce Drive).

Transportation Assistance Number:
(610) 827-7802

West Vincent Township

Evacuation Route: Take Route 100 South to Route 113 South to Route 30 Bypass West to Route 322 East to the reception center.

Reception Center: Downingtown West HS, Downingtown.

Transportation Assistance Number:
(610) 458-7444

Evacuation Routes/Reception Centers/ Transportation Assistance Numbers

Municipal Pick-up Points

I. Phoenixville Borough

Contact Borough Hall for exact pick-up times and locations.

North Side

Friendship Field

Filmore & Franklin Sts.

Holy Trinity Church

Dayton at St. Mary's St.

Black Rock Boat Dock

Rt. 113 at Schuylkill River

High St. Playground

400 Blk. of High St. next to Friendship Fire Company

Westridge Community Ctr.

Township Line & Mowere Rds.

Fairview St. Projects

Fairview & Grant Sts.

Downtown Area

Municipal Parking Lot

Bridge & Main Sts.

Emergency Operation Ctr.

Buchanan & Morgan Sts.

Phoenix Cleaners Parking Lot

300 Blk. Bridge St.

Presbyterian Church Parking Lot

Main Street & Washington Ave.

East Side

Reeves Park

Second Ave. & Main St.

Acme Parking Lot

Starr St. west of Nutt Rd.

Barkley School

Second Ave. & Lincoln Ave.

Second Avenue School

Second Ave. & Carson St.

West Side

DeSano Field

Wheatland & Mason Sts.

The West Company Parking Lot

1050 W. Bridge St.

Phoenixville Area Sr. High

1200 Blk. Gay St.

Walgreens

Nutt Rd. & Fridge St.

Cascaden Park

1200 Lane Ave. (At Water Tank)

Werner Bus Company Lot

Chester Ave., & Paradise St.

Grimm AME Church Field

Morris St. & Lincoln Ave.

Gaines Creek Community Center

Harvest Lane

Eland Downes Community Center

Eland & Rt. 113

United Methodist Church

1200 Blk. S. Main St.

II. Spring City Borough

Contact Borough Hall for exact pick-up times and locations.

- Church St. & Bridge St.
- Church St. & Yost Ave.
- Church St. & New Str.
- Church St. & Hall St.
- Church St. & Chestnut St.
- Church St. & Poplar St.
- Church St. & Washington St.
- Church St. & Walnut St.
- Church St. & Pikeland Ave.
- Main St. & Walnut St.
- Main St. & Poplar St.
- Main St. & Chestnut St.
- Main St. & Hall St.
- Main St. & New St.
- Main St. & Yost Av.
- Main St. & Bridge St.
- Bridge St. & Penn St.
- Penn St. & Bridge St.
- Ridge Ave. & Glass St.
- Bridge St. & Glass St.

Chester County-Specific School Information

School District: Owen J. Roberts District Schools

Risk Schools: All

Host Schools: Twin Valley H.S./M.S., Twin Valley Elementary Center

School District: Phoenixville Area School District

Risk School: Phoenixville H.S.

Host School: Tredyffrin-Easttown Middle School

Risk Schools: Phoenixville Middle School

Schuylkill Elementary

Barkley Elementary

East Pikeland Elementary

Kindergarten Center

Host School: Conestoga High School

School District: Downingtown Area School District

Risk School: Pickering Valley Elementary

Host School: Downingtown High School (East)

School District: Great Valley School District

Risk School: Charlestown Elementary

Host School: Great Valley High School

Evacuation Routes/Reception Centers/ Transportation Assistance Numbers

Montgomery County

Collegeville Borough

Evacuation Route: Take Germantown Pike East Right on Chemical Road to the reception center.

Reception Center: Plymouth Meeting Metroplex.

Transportation Assistance Number: (610) 489-9208

Douglass Township

Evacuation Route: Take Route 100 North to Route 29 North to the reception center.

Reception Center: Emmaus High School, Emmaus.

Transportation Assistance Number: (610) 367-6062

Green Lane Borough

Evacuation Route: Take Route 63 East to Route 113 North to the reception center.

Reception Center: County Line Plaza, Telford.

Transportation Assistance Number: (215) 234-9300

Limerick Township

Evacuation Route: Take Ridge Pike East to Germantown Pike East Right on Chemical Road to the reception center.

Reception Center: Plymouth Meeting Metroplex.

Transportation Assistance Number: (610) 495-6432

Lower Frederick Township

Evacuation Route: Take Route 29 North to Perkiomenville Road to Route 63 East to Route 113 North to the reception center.

Reception Center: County Line Plaza, Telford.

Transportation Assistance Number: (610) 287-8857

Lower Pottsgrove Township

Evacuation Route: Take Route 663 North to Route 309 North to the reception center.

Reception Center: Southern Lehigh High School.

Transportation Assistance Number: (610) 323-0436

Lower Providence Township

Evacuation Route: Take Route 363 South to Route 422 East to Route 202 North to Pennsylvania Turnpike East to Exit 351 to Route 1 North to the reception center.

Reception Center: Neshaminy Mall, Cornwells Heights.

Transportation Assistance Number: (610) 539-8021

Lower Salford Township

Evacuation Route: Take Route 113 North to the reception center.

Reception Center: County Line Plaza, Telford.

Transportation Assistance Number: (215) 256-9595

Marlborough Township

Evacuation Route: Take Route 63 East to Route 113 North to the reception center.

Reception Center: County Line Plaza, Telford.

Transportation Assistance Number: (215) 234-9300

New Hanover Township

Evacuation Route: Take Route 663 North to Route 309 North to the reception center.

Reception Center: Southern Lehigh High School.

Transportation Assistance Number: (610) 323-1008

Perkiomen Township

Evacuation Route: Take Route 29 South to Route 113 North to Route 73 East to Route 202 North to the reception center.

Reception Center: Montgomery Mall, North Wales.

Transportation Assistance Number: (610) 489-4034

Pottstown Borough (Central)

Evacuation Route: Take Route 100 North to Route 29 North to the reception center.

Reception Center: Emmaus High School, Emmaus.

Transportation Assistance Number: (610) 970-6500

Pottstown Borough (North)

Evacuation Route: Take Route 663 (North Charlotte Street) to Route 309 North to the reception center.

Reception Center: Southern Lehigh High School.

Transportation Assistance Number: (610) 970-6500

Pottstown Borough (East)

Evacuation Route: Take Route 422 Bypass West to the reception center.

Reception Center: Exeter Township Building.

Transportation Assistance Number: (610) 970-6500

Pottstown Borough (South)

Evacuation Route: Take Hanover Street South via Hanover Street Bridge to Route 724 West to the reception center.

Reception Center: Robeson Township Building.

Transportation Assistance Number: (610) 970-6500

Pottstown Borough (West)

Evacuation Route: Take Route 422 West to the reception center.

Reception Center: Exeter Township Building.

Transportation Assistance Number: (610) 970-6500

Royersford Borough

Evacuation Route: Take Township Line Road to Ridge Pike East to Germantown Pike East Right on Chemical Road to the reception center.

Reception Center: Plymouth Meeting Metroplex.

Transportation Assistance Number: (610) 948-3737

Schwenksville Borough

Evacuation Route: Take Route 73 East to Route 202 North to the reception center.

Reception Center: Montgomery Mall, North Wales

Transportation Assistance Numbers: (610) 287-9370 or (610) 287-7442

Skippack Township

Evacuation Route: Take Route 113 North to Route 73 East to Route 202 North to the reception center.

Reception Center: Montgomery Mall, North Wales.

Transportation Assistance Number: (610) 584-5453

Evacuation Routes/Reception Centers/ Transportation Assistance Numbers

Trappe Borough (North)

Evacuation Route: Take Route 113 North to Route 73 East to Route 202 North to the reception center.

Reception Center: Montgomery Mall, North Wales.

Transportation Assistance Number:
(610) 506-6101

Trappe Borough (South)

Evacuation Route: Take Ridge Pike East to Germantown Pike East, right on Chemical Road to the reception center.

Reception Center: Plymouth Meeting Metroplex.

Transportation Assistance Number:
(610) 506-6101

Upper Frederick Township

Evacuation Route: Take Perkiomenville Rd. to Route 63 East to Route 113 North to the reception center.

Reception Center: County Line Plaza, Telford.

Transportation Assistance Number:
(610) 754-6436

Upper Pottsgrove Township

Evacuation Route: Take Route 100 North to Route 29 North to the reception center.

Reception Center: Emmaus High School, Emmaus.

Transportation Assistance Number:
(610) 323-8675

Upper Providence Township

Evacuation Route: Take Route 422 East to Route 202 North to Pennsylvania Turnpike East to Exit 351, then Route 1 North to the reception center.

Reception Center: Neshaminy Mall (Cornwells Heights).

Transportation Assistance Number:
(610) 933-9179 or (610) 933-8608

Upper Salford Township

Evacuation Route: Take Route 63 East to Route 113 North to reception center.

Reception Center: County Line Plaza, Telford.

Transportation Assistance Number:
(610) 287-6160

West Pottsgrove Township

Evacuation Route: Take High Street West to Route 422 West to the reception center.

Reception Center: Exeter Township Building (East of Reading).

Transportation Assistance Number:
(610) 323-7717

Evacuation Routes/Reception Centers/ Transportation Assistance Numbers

Pottstown Pick-up Points

(Contact Pottstown Borough Hall for exact pick-up times for your zone.)

Central Zone

St. Aloysius Church Social Hall

Beech & Penn Sts.

1st United Presbyterian Church

750 N. Evans & Nightingale

Second Baptist Church

507 N. Adams St.

First Church of the Brethern

Fifth & York Sts.

North Zone

YMCA

Jackson & Adams Sts.

St. Paul's United Church of Christ

931 Franklin & Grace Sts.

South Zone

Holy Trinity Roman Catholic Church

366 South St.

East Zone

Richard Ricketts Community Center

Beech & Grant Sts.

R.P. Smith Towers

High & Washington Sts.

Pollock House

High & Washington Sts.

Chesmont Professional Bldg.

13 Armand Hammer Blvd.

Church of the Nazarene

1045 Beech St.

Goodwill Fire Company

High & Bailey Sts.

Congregation Mercy & Truth Synagogue

575 North Keim St.

West Zone

St. Michaels Ukrainian Catholic Church

425 W. Walnut St.

Empire Hook and Ladder Company

Chestnut & Franklin St.

Philadelphia Steam Fire Engine Co. #1

Chestnut & Penn Sts.

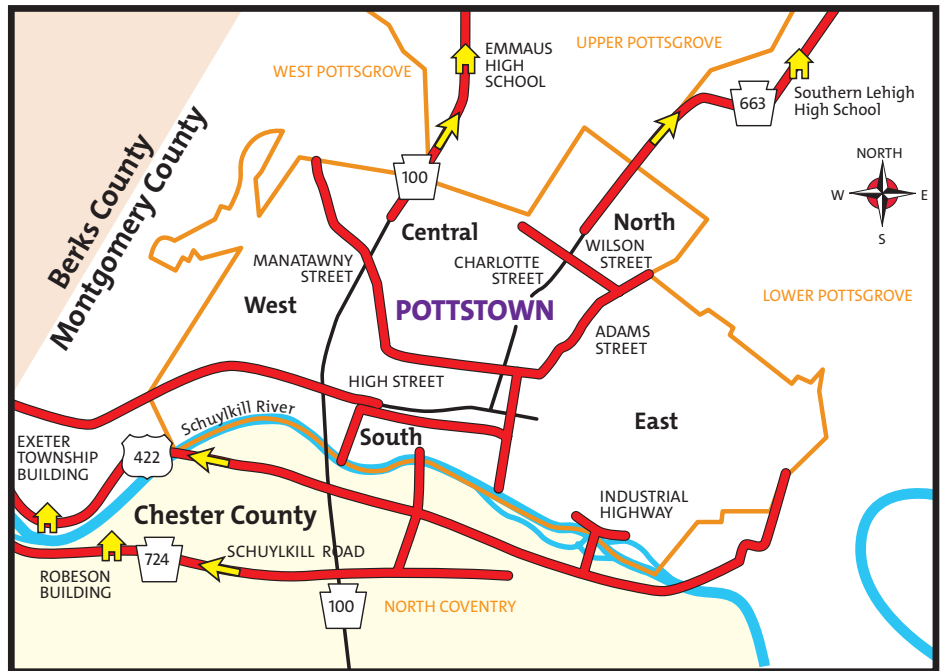
The Ice House

King & Manatawny Sts.

Pottstown Area

Senior Citizen's Center

724 N Adams St.



Montgomery County-Specific School Information

School District: Methacton

Risk Schools: All Public Schools

Host School: Norristown Area High School

School District: Perkiomen Valley

Risk Schools: Perkiomen Valley High School

Perkiomen Valley Middle School East

Host School: North Penn High School

Risk Schools: Perkiomen Valley Middle School

West

Schwenksville Elementary School

Host School: Pennfield Middle School

Risk Schools: Evergreen Elementary School

South Elementary School

Host School: Penndale Middle School

Risk Schools: Skippack Elementary School

Host School: Pennbrook Middle School

School District: Pottsgrove

Risk Schools: All Public Schools

Host School: Southern Lehigh High School

Complex (Center Valley-Lehigh County)

School District: Pottstown

Risk Schools: All Public Schools

Host School: Emmaus High School Complex

(Lehigh County)

School District: Souderton Area

Risk School: Salford Hills Elementary School

Host School: Indian Valley Middle School

(Harleysville)

School District: Spring-Ford Area

Risk School: All Public Schools

Host Schools: Montgomery County

Community College

School District: Upper Perkiomen

Risk School: All students living in the Emergency Planning Zone.

Host School: Retained at Upper Perkiomen High School (Red Hill)

after normal dismissal time.

Vocational Schools

Risk School: Western Center for

Technical Studies

Host Schools: Upper Perkiomen High

School (Red Hill)

What Is Radiation?

Radiation is energy in the form of rays or particles. Some atoms – the ones we call radioactive – are unstable. They go through a natural process called “decay” in which they change into a stable atom. In the process of decay, they throw off rays or particles called radiation.

We measure radiation in units called millirems. A millirem measures the effect of radiation on our bodies, as degrees measure temperature and inches measure distance.

After more than 90 years of intensive study, radiation is the most scientifically understood, easily detected, precisely measured, effectively controlled and strictly regulated of all environmental agents.

Radiation is exactly the same, whether from nature or medical or industrial activities.

We also use radioactive materials – which give off radiation – in hundreds of beneficial, life-saving activities. For example, radioactive materials are used in many smoke detectors and in the X-ray equipment used by doctors. Nuclear energy plants, our second largest source of electricity in the United States, also use radioactive materials as fuel.

For More Information, Please Visit:

www.dep.state.pa.us/BRP

www.nrc.gov

www.nei.org

www.hps.org/publicinformation/Radterms

www.bt.cdc.gov/radiation

What You Need to Know About Nuclear Power Plants and Radiation

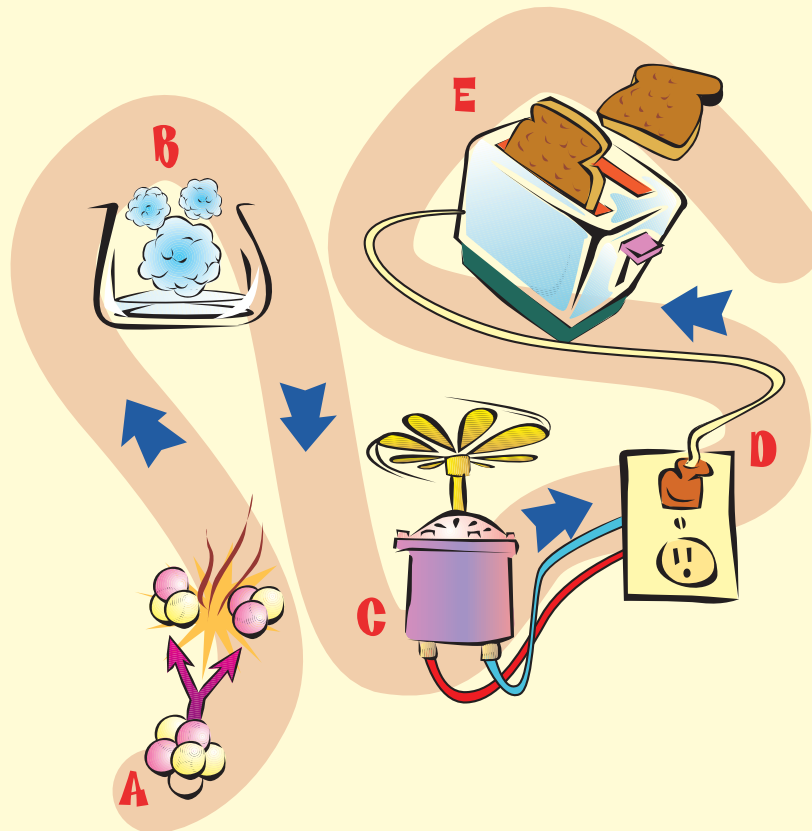
How Do Nuclear Plants Work?

Power plants create electricity by running steam turbines, which are powered either by fossil fuels – coal, oil, natural gas – or by nuclear power. Nuclear technology produces energy by splitting uranium atoms in a process called fission. (A) Fission generates heat that (B) boils water for the steam that runs the (C) turbines, which produce the (D) electricity that we all use – making, for instance, toast for breakfast.

In a nuclear power plant, pea-sized uranium pellets are stacked inside long, thin fuel rods, which are grouped in “assemblies” inside a reactor “core.” The core is encased in a very thick steel capsule, and the entire reactor is further protected by an airtight steel and concrete building called a “containment.” This complex structure is designed to help ensure the safe utilization of nuclear power.

How Do We All Benefit From Nuclear Power?

Any fuel used to produce energy also produces waste. By-products of coal-burning include smoke, ashes and slag. Even with the latest technologies, it is impossible to prevent some of this waste from reaching the environment outside the power plant. Nuclear power generation, on the other hand, produces waste primarily in the form of spent fuel, which is not released into the environment. Besides helping to protect the environment, nuclear energy is also highly efficient, producing vastly more energy for its weight than coal or oil. We would have to burn more than 120 gallons of oil or up to a ton of coal to produce the same amount of energy as that found in a single pellet of uranium.



What to Do in an Emergency

Monitor and Prepare

Tune your radio or TV to one of the stations listed in this brochure. Monitor the radio and TV for emergency information and follow emergency instructions. People should prepare for possible evacuation (e.g.; reunite with family members, assemble emergency kits, provide for pet needs, keep off of the road as much as possible)

Keep Phone Lines Open

Please do not make unnecessary phone calls. Leaving phone lines open for emergency workers will help everyone involved. If you require assistance, call the emergency phone numbers broadcast on the radio.

Shelter-in-Place

Go indoors and stay there. Close all doors and windows and shut off any systems that draw in outside air, such as furnaces, fireplaces and air conditioners. Keep listening to the radio for updates. Keep pets inside and shelter farm animals. If traveling, close windows and vents.

If Instructed to Evacuate

In an evacuation, people in the affected area will be asked to go to local reception centers listed within this brochure. After this, they can stay at specified mass care centers or with friends or relatives outside the evacuation zone.

Please do not try to pick up children or others at schools, hospitals, nursing homes or overnight campgrounds. These facilities will be following their own special emergency plans, and you would most likely miss connections. If evacuated, students, hospital patients and nursing home residents will be accompanied to relocation centers where their needs will be addressed. To find out where people are being moved, stay tuned to the radio.

Plan for three days away from home, locking up and turning appliances off as you would for a weekend vacation. Pack all necessary items. (See "Packing Checklist.") Evacuate everyone in your home, following directions given on the radio. These routes will have been selected as the safest ways out of the affected area.

Shadow Evacuation

Persons should only evacuate when instructed to do so. Evacuation of individuals not within the declared evacuation area could impede evacuation traffic flow. Monitor the radio and prepare to follow instructions.

Staged Evacuation

You may be instructed to Shelter-in-place until people in a higher risk area are evacuated. Monitor the radio and prepare to follow instructions.

Information for Farmers

When advised to do so, remove all livestock from pasture, shelter if possible, and provide them with stored feed and protected water. The county U.S. Department of Agriculture representative will provide further instructions regarding the protection of livestock and foodstuffs.

School Information

If your child's school is in session at the time evacuation is recommended, children attending schools located within the emergency planning zone will be transported to designated host schools outside the area. They will remain under supervision until picked up by parents or guardians. These host schools have been planned to coincide with main evacuation routes. Children whose homes are inside the emergency planning zone, but who attend school outside the emergency planning zone, will not be sent home if an evacuation is recommended. They will remain at the school under supervision until picked up by parents or guardians. See the "County-specific School Information" within this brochure or contact school officials for more information.

Non-Public School and Day Care Information

Parents and guardians with children attending non-public schools or at day care facilities within the emergency planning zone should become familiar with the facilities' emergency plans. Contact the facility operator for more information.

How to Prepare for an Emergency

You never know when you might have to leave your home on short notice. A nuclear incident is only one possibility. Floods, fires, chemical spills or severe illness could occur at any time. Preparing now will help you respond more quickly in any emergency.

Emergency Kit

Keep an emergency kit – portable radio, flashlight, extra batteries, extra car keys, first aid kit and other items – in a special place that the whole family can easily locate.

Include this booklet in your emergency kit with your location marked on the map. Write a list of the items you would want to take if you had to leave home quickly and post the list in a convenient spot. Be sure to keep a supply of all the items on your list. Gather any important documents that you might need in an emergency and keep them together in a safe place that you can access quickly and easily.



Transportation

Maintain your vehicle in good running order and keep the gas tank at least half full at all times. If you will need transportation in an emergency, use the attached reply card to notify local authorities now.

Pets

Only service animals will be permitted inside reception centers or shelters. Pets will not be allowed inside reception centers and shelters. Pet sheltering information will be available at the reception centers and shelters for your area.

Contact your respective County Emergency Management Agency for additional information.

Additional Information

For more information on emergency planning in your area, please contact:

Berks County

Department of Emergency Services
Direct Link Technology Center
2561 Bernville Road
Reading, PA 19605
(610) 374-4800
www.BerksDES.com

Attention Berks County Residents

If you are a resident of Berks County and require special assistance during an emergency, please complete the on-line special needs survey at <http://www.berksdes.com>. After accessing the website, click on the "Berks County Special Needs Survey" link.

DO NOT COMPLETE THE SURVEY ENCLOSED WITH THIS BROCHURE.

If you do not have access to a computer or have additional questions, please call Berks DES at (610) 374-4800 ext. 8206.

Montgomery County

Office of Emergency Preparedness
50 Eagleville Road
Eagleville, PA 19403
(610) 631-6530
www.dps.montcopa.org



Montgomery County
Department of Public Safety



@MCpublicsafety

Chester County

Department of Emergency Services
Government Services Center
601 Westtown Road, Suite 12
P.O. Box 2747
West Chester, PA 19380-0990
(800) 732-1580
www.chesco.org/des

Attention Chester & Montgomery County Residents

Residents of Chester and Montgomery Counties should sign up to receive official alerts and notifications at:

ReadyChesCo:

www.readychesco.org

ReadyMontCo:

www.readymontco.org

This system provides direct and immediate information during an emergency and allows you to provide detailed and confidential information useful to your local emergency management agency. If you do not have access to a computer, a friend or family member can complete the online registration for you.

An instructional video is available at:

www.readymontco.org

Pennsylvania

Emergency Management Agency
2605 Interstate Dr.
Harrisburg, PA 17110
www.pema.state.pa.us

Exelon Corporation



www.exeloncorp.com/limerick



@exelonnuclear

People With Special Needs

The information gathered by this survey is CONFIDENTIAL. Your county emergency management agency (EMA) and emergency services personnel utilize this information for emergency response planning.

Those with impaired sight, hearing or mobility might have difficulty responding to an emergency.

If you, someone in your household or someone you know who lives in the emergency planning zone will need special assistance in an emergency, please notify your county EMA today. Simply fill out and mail the attached reply card. It is postage-paid, so you don't even need a stamp.

This information is updated annually. Please return this survey even if you have previously responded. If you prefer, you may contact your local EMA directly. Area agencies are listed elsewhere in this pamphlet.

Berks County residents please complete the on-line survey at www.berksdes.com or call 610-374-4800 x8206 in lieu of using this reply card.

Local officials may contact you for additional information.

Please check "yes" or "no" for the following questions:

Fold Here

1 Do you have a hearing impairment that would make it difficult to hear outdoor warning sirens or other emergency notifications? Yes No

2 Do you have a medical or physical condition that would make it difficult to evacuate in an emergency? Yes No

3 Are you without any personal means of transportation, such as a car or truck, to evacuate in an emergency? Yes No

Number of people needing transportation? _____

4 Do you have a radio or television? Yes No

Name _____

Address _____

City _____

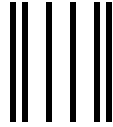
Township _____

County _____ State and ZIP _____

Email Address _____

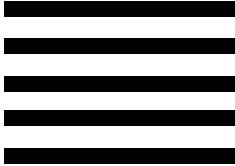
Telephone Number _____

2016/2017



NO POSTAGE
NECESSARY
IF MAILED
IN THE
UNITED STATES

BUSINESS REPLY MAIL
FIRST-CLASS MAIL PERMIT NO. 2 KENNETT SQUARE, PA



POSTAGE WILL BE PAID BY ADDRESSEE

EXELON EMERGENCY PREPAREDNESS
200 EXELON WAY
KENNETT SQUARE PA 19348-9801



Please TAPE closed here. DO NOT STAPLE.