

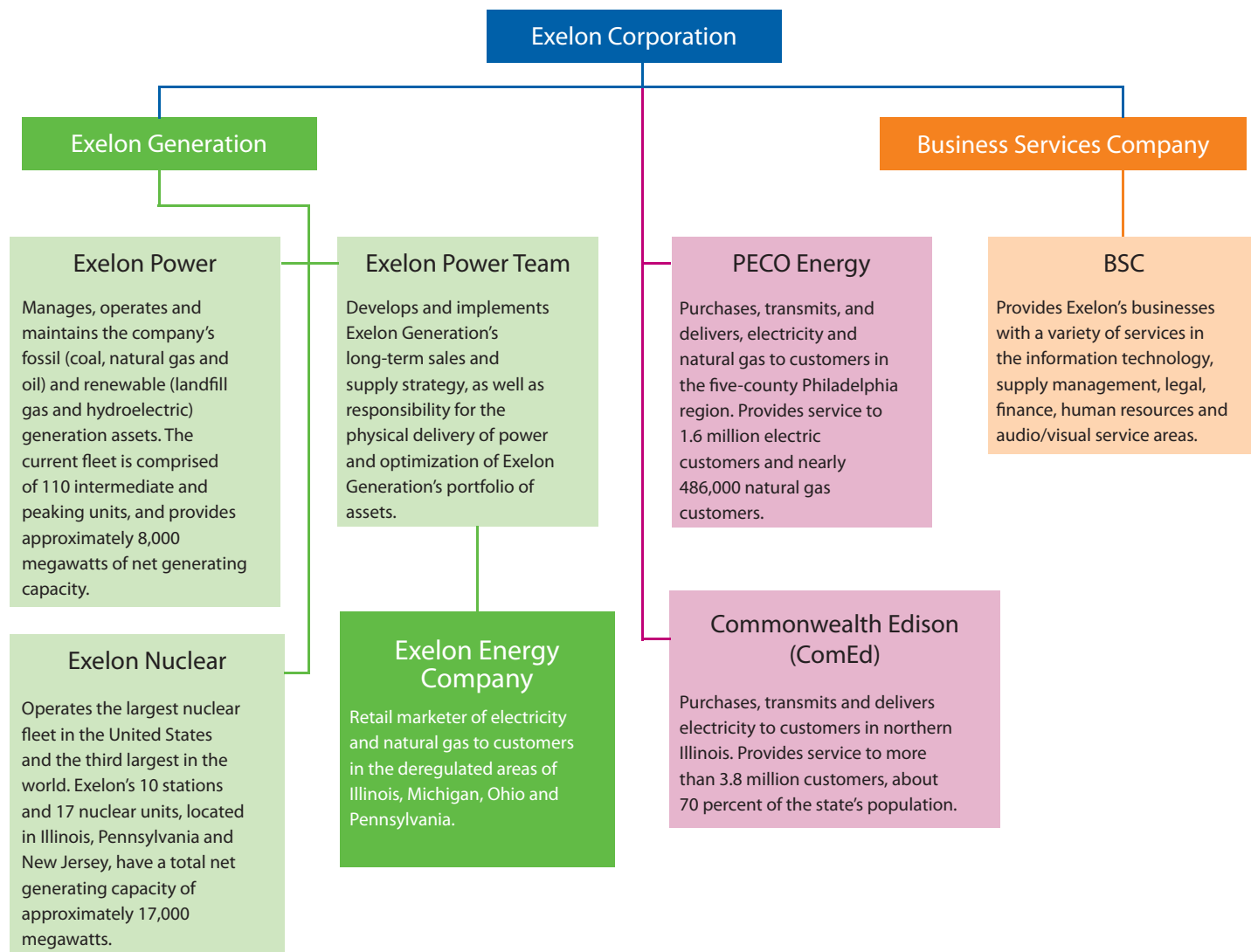
Your Power Partner

Exelon Energy is one of the largest retail energy marketers in the country, delivering energy and related services to commercial and industrial customers. Since 1997, customers have counted on Exelon Energy to deliver reliable and cost-effective electricity and natural gas products. In all, Exelon Energy has over 18,000 electricity accounts in Illinois, Pennsylvania and Ohio and approximately 11,500 natural gas accounts in Ohio, Illinois and Michigan.

Exelon Energy brings an unmatched depth of knowledge to the retail energy markets we serve. Our locally based sales representatives have a wealth of experience in the industry and work closely with their customers to craft immediate and long-term energy strategies. Our performance is best proven by our customer loyalty—the vast majority of our customers continue to do business with Exelon Energy year after year.

Backed by one of the largest generation fleets in the country and working in close cooperation with one of the industry's leading power marketing organizations, Exelon Energy is able to provide customers a vertically integrated energy purchase.

THE EXELON CORPORATE STRUCTURE



EXELON ENERGY - YOUR POWER PARTNER

Products Offered

Electric

Full Requirements
Managed Index

Natural Gas

Fixed-Price Products
Market-Based Products
Index-Based
NYMEX Basis

Environmental Products

Renewable Energy Certificates (RECs)
Green-e Certified RECs
Emission-Free Energy Certificates (EFECs)

Regions Served

Electric - Illinois

Ameren
ComEd

Natural Gas - Michigan

Michigan Consolidated Gas Company (MichCon)
Consumers Energy Company

Natural Gas - Illinois

Nicor
North Shore Gas
Peoples Energy

Electric - Pennsylvania

PECO
PPL Electric Utilities
West Penn Power
Penelec
Met-Ed

Electric - Ohio

Cleveland Illuminating Company
Toledo Edison
Ohio Edison

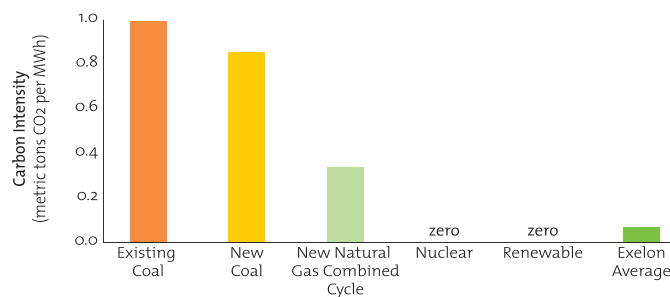
Natural Gas - Ohio

Columbia Gas of Ohio
Dominion East Ohio
West Ohio Gas
Vectren
Duke Energy

Your Partner For A Low-Carbon Future

With the lowest carbon footprint of any large electricity generator in the United States, Exelon is leading the way in addressing the issue of climate change and helping to create a low-carbon future. Exelon Energy is doing its part to help customers join in the important journey toward a low-carbon future by offering various energy products with low environmental impact. With access to over 1,400 megawatts (MWs) of renewable energy—wind, solar, landfill gas and hydroelectric—Exelon Energy offers many environmentally responsible energy options. In addition to renewable energy resources, Exelon Generation's nuclear fleet produces 130 million megawatt-hours (MWhs) of power annually with virtually no greenhouse gas emissions.

Carbon Intensity of Generation Technologies



Source: Congressional Budget Office; EIA and EPA (compiled by NRDC). Actual carbon intensity of individual fossil plants depends on specific fuel type, plant efficiency, emissions controls, and other factors.